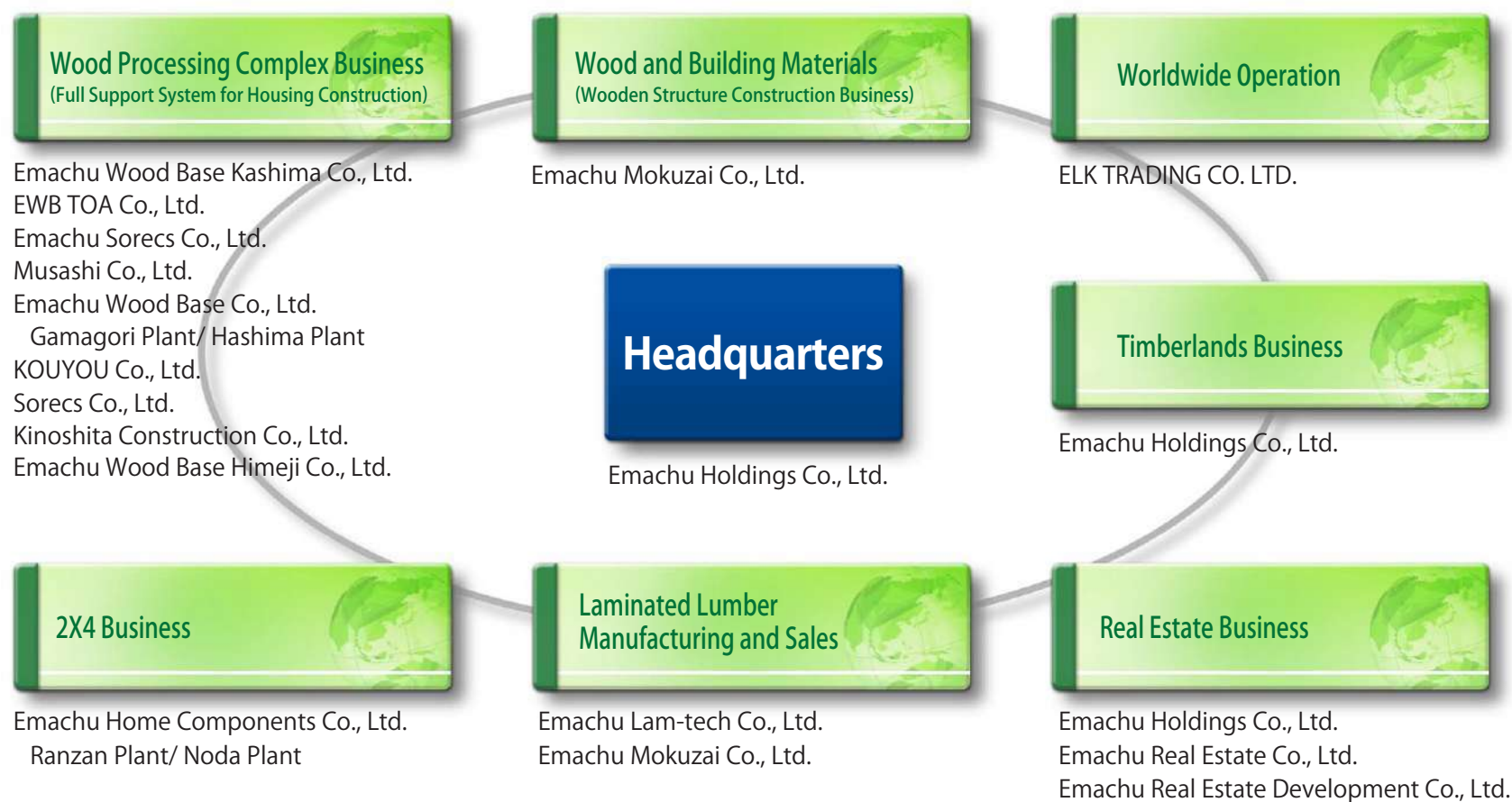


Our Business - Emachu Group

2023.11.30



Wood and Building Materials

Wood has been attracting public attention as a reproducible natural resource, becoming an indispensable product for our lives and various fields of the society. Emachu group has been engaged in procurement and supply of wood and has contributed to Japan's social development for more than 100 years. Emachu group has adapted to the changes of demand regarding wood and building materials, and will continue to meet the needs of our customers.

Using wood from certified and appropriately managed forests lead to environmental contribution. Each piece of wood has different characteristics that need to be discerned and sorted properly for its use. Emachu group is a reliable company which has polished its percipient through the experience of trading wood since its establishment in 1923.



Provided by: Taisei Corporation
Emachu Mokuzai Co., Ltd. was in charge of manufacturing and installing the timber used in the large roof that covers the spectator stands at the National Stadium.

Japanese demand for wood has undergone significant changes due to changes of people's lifestyle and the legal system. Emachu group's wood and building materials business has always adapted to the changes of the market and customers' needs. In recent years, Emachu group has been working on the utilization and promotion of domestic wood. In addition, Emachu group has been promoting utilization of wood for various kinds of buildings such as educational, welfare, and commercial facilities.



Wood and Building Materials

Products and Service

Sawing Product

North American Lumber
European Lumber
Russian Lumber
Southsea Lumber
Cinese Lumber
Domestic Lumber
2 x 4 Lumber
Hardwood
Custom Cut Lumber
Structural Laminated Lumber



Log

North American Log
European Log
Russian Log
South East Asian Log
Domestic Log
Hardwood



Plywood

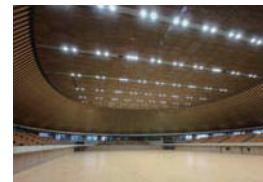
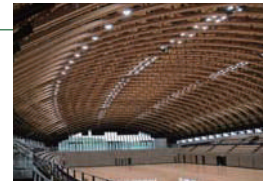
Ordinary Plywood
Concrete Form Panel
Special Purpose Plywood
Structural Panel



Large-scale wooden structures

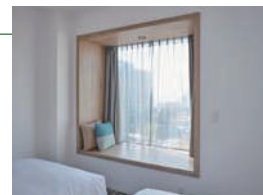
Planning, Design, and Construction

Courtesy of Taisei Corporation
Emachu Mokuzai Co., Ltd. was in charge of manufacturing and installing the timber used in the large roof that covers the spectator stands at the National Stadium.



Wood Fiber Board

Insulation Board
Medium Density Fiberboard
Hard Board
Particle Board
Melamine Faced Chipboard
High Pressure Laminate (evola)
Veneered Panel (SHINNOKI, QUERKUS)

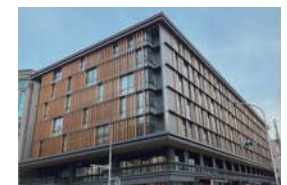


S-Tech(Sendai Technologies) Wood

<https://www.st-wood.jp/>

Decking
Louver
Wooden Fence
Outside Wall
Flooring
Inside Wall

S-tech Wood: A specially dried wood product. Durability has been improved by resolving the decaying constituents of the tree. This product is light-weight, has high dimensional stability, and is easy to work with.



Wooded Building Materials

Inner Wall
Ceiling
Flooring
Furnishing Laminated Lumber
Incombustible Veneered Panel
(Emma PLUS)
Incombustible Veneer Wallpaper
(Emma)
<https://www.emma-emachu.com>



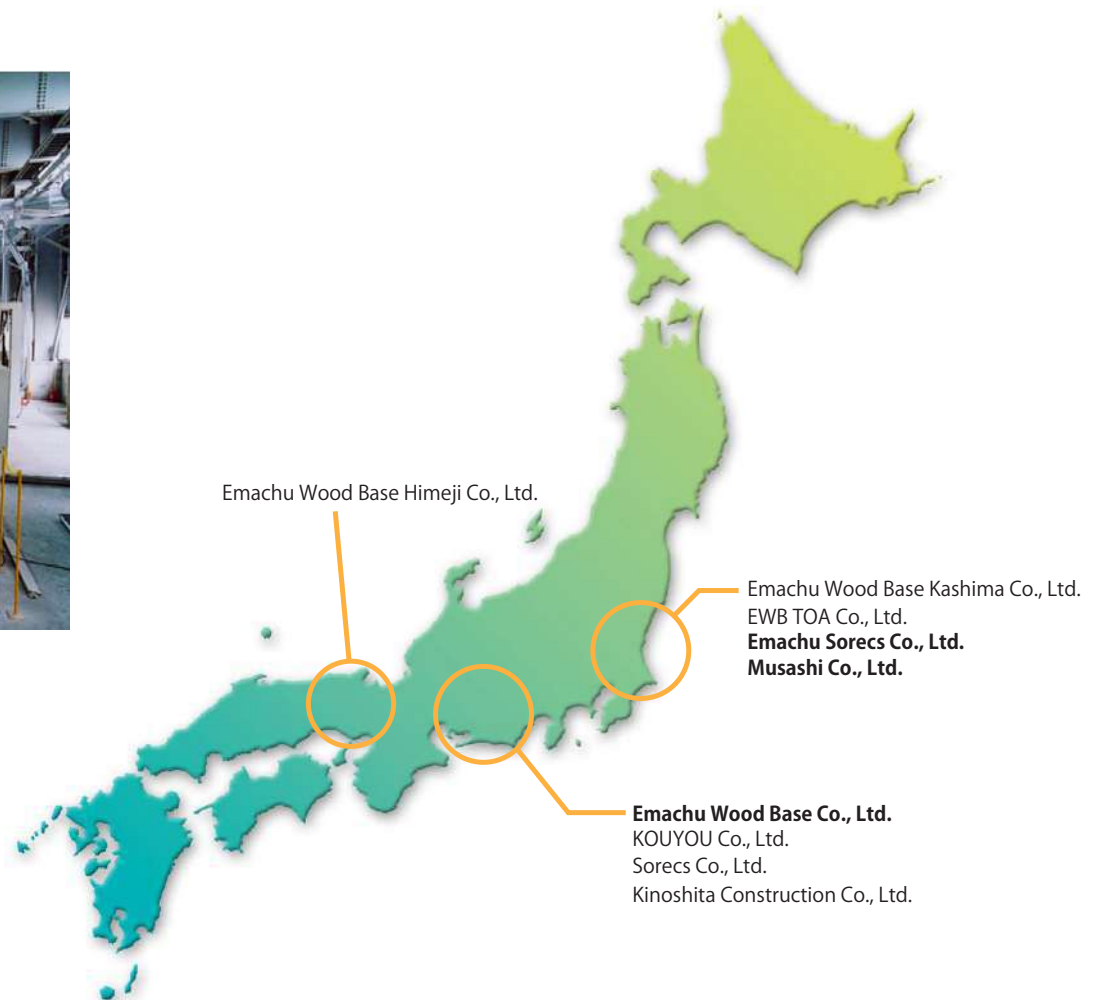
Wood Processing Complex Business

Emachu group's wood processing complex business, the "pre-cut" business model using the conventional wooden framework construction. Emachu group vertically integrates material procurement, processing, and distribution.

Emachu Wood Base



Emachu Wood Base is a pre-cut facility with the latest pre-cut machines and outstanding skills providing a full support system. This includes guaranteed material procurement, structural calculation, and various kinds of design and planning services.



Wood Processing Complex Business

The pre-cut housing materials total delivery system

Sorecs provides pre-cut materials as well as Emachu group's original products that meet its customers' needs.

Housing materials total delivery system



Building materials, housing equipment, fixtures, sash, etc.

Pre-cut materials



Emachu original products



Decking materials

Trusted support system



Design, application support

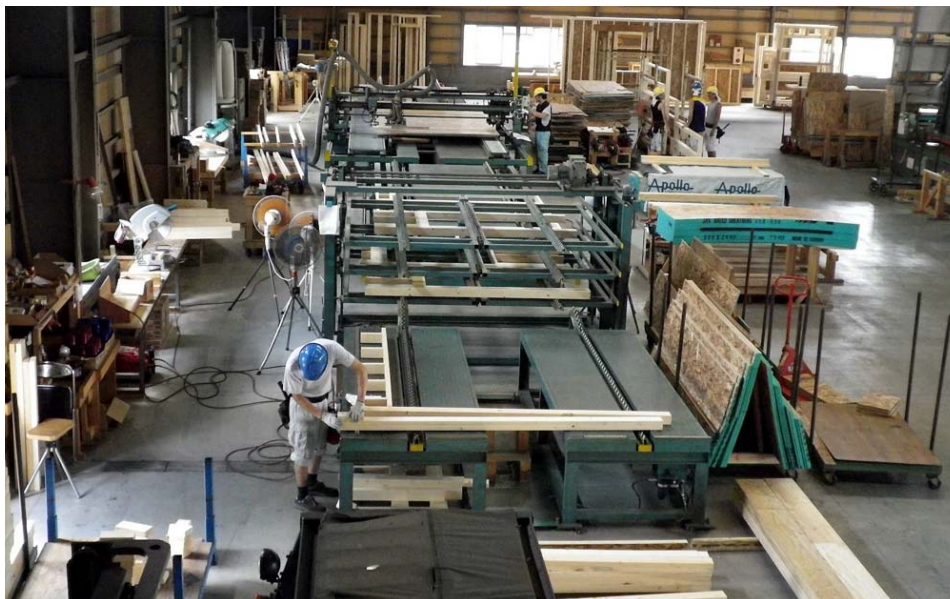
System Of REsidential Components & Service



2 x 4 Business

The 2x4 construction method was born in North America, and has since become popular through standardization of structural materials and building regulations. Emachu group supplies 2x4 construction materials for building comfortable houses that can withstand earthquakes and excel in sound and heat insulation.

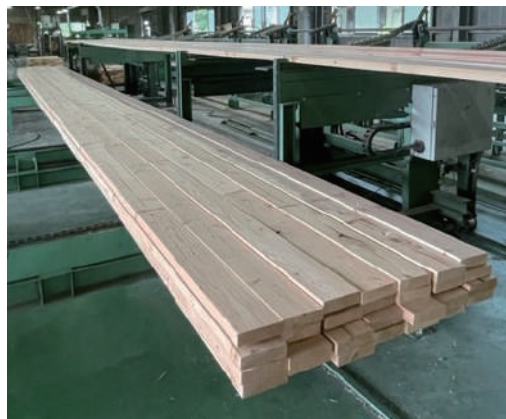
Emachu group's 2x4 business consists of importing dimension lumber and processing 2x4 home components. Assembling, pre-cut, and panel production is done by the latest machinery and skilled engineers. In addition, Emachu group contributes to reducing industrial waste and shortening construction time, therefore increasing efficiency for housing construction.



Laminated Lumber Manufacturing and Sales

Structural laminated lumber is an outstanding engineered wood product. Its strength and dimensional stability is higher than solid wood. Since structural laminated lumber can also be made to any shape and length, it has been widely used for housing materials and large buildings. By purchasing lamstock from all over the world and manufacturing structural laminated lumber, Emachu group contributes to the construction of secure wooden homes and other wooden buildings.

Emachu group manufactures laminated lumber to meet its customers' specific needs. Emachu Lam-tech has acquired many kinds of JAS certifications according to species and size, and will meet customers' various needs by providing products, such as E150 high-strength Douglas Fir products and products made of domestic materials for community buildings, etc. . Emachu Lam-tech also provides consistent quality products based on the strict quality control of ISO9001. Emachu Mokuzai does its own market development and takes a part in the sales of structural laminated lumber manufactured by Emachu Lam-tech.



Real Estate Business

Emachu group proposes the best solution for a wide range of real estate business fields. Emachu group responds to the customers' needs and supports to maximize the asset value of each property. Not to mention profitability and stability, Emachu group also takes into consideration;

1. **"Environmental friendliness" a world-wide issue.**
2. **"City-wide planning" raises property value of the surrounding area.**
3. **"Flexible thinking" corresponds to the unforeseeable future.**



Chibaminato Logistics Center



Gamagori Solar Power Plant



Shinkiba Station Front Hotel



Kawasaki Refrigerated Warehouse



Nagareyama Shopping Center



Kinshicho Building

Real Estate Business

Overseas real estate development business



Emachu Yarrow Bay Plaza

- Kirkland, Washington, USA
- Office Building
- Three stories above ground and two below
- Floor space: about 4,897m²
- Acquired in June, 2013



Emachu Ridge Pointe Corporate Center

- Bellevue, Washington, USA
- Office Building
- Three stories above ground and two below
- Floor space: about 4,680m²
- Acquired in June, 2017

In addition to the real estate business in Japan, Emachu group considers overseas real estate development business focusing on diversified investments.



Real Estate Business

Harumi Community Development

Redevelopment around Emachu Group's Headquarters utilizing the legacy of the 2020 Tokyo Olympics and Paralympics



Tokyo Innerharbor Area

With the success of the 2020 Tokyo Olympics and Paralympics, Harumi and the surrounding area are receiving a lot of attention.

Various infrastructure developments and new projects are underway in the surrounding area.

Emachu group, in cooperation with neighboring companies, will consider new developments of the Harumi area to make a better community.

"Development project and concepts around Harumi"

- 2040: •Opening of new subway line
- 2030: •Partial opening of large-scale development at the former Tsukiji Market
- 2024: •Harumi Flag opened on the former site of the Tokyo Olympic and Paralympic village
- 2021: •The Tokyo Olympic and Paralympic Games held

Timberlands Business

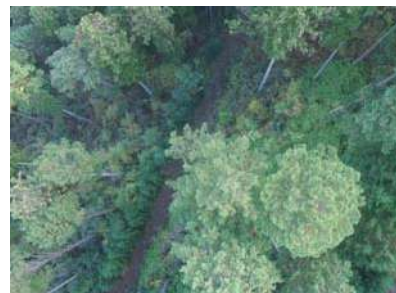
Emachu group entered into the full-scale forestry business in 2003, year of the 80th anniversary of its founding, and has acquired about 5600ha of timberlands so far.

The forestry business is a circular industry that involves planting, growing, cutting, using trees and then replanting. It is a business that truly realizes the principles of the SDGs. However, the continued slump in timber prices makes it difficult to maintain the business cycles by simply cutting down trees and selling them. Forests have the characteristic that after certain period following planting, the growth rate plateaus, and the amount of carbo dioxide absorption decreases. Therefore, in order to maintain the functions and health of forests, it is necessary to establish a series of processes that involve planned logging, efficient use of the forest products that lead to reforestation. Emachu will utilize the strengths of the group, which include a wide range of timber businesses, to promote high added value through manufacturing of forest products and advanced utilization through fuel use, etc., and strive to realize the business cycle. Specifically, in addition to selling logs, we will comprehensively engage in partnerships with sawmills, production of fuel chips, biomass power generation, and certification of carbon dioxide absorption amounts in the forestry sector. As the global competition for resources is expected to intensify, from the perspective of securing timber resources, we will continue to expand our company-owned forests and play a part in the Emachu Group's timber business.

Forests owned by Emachu

Emachu group owns timberlands, located in Shizuoka, Aichi, Tokushima, Wakayama and Miyazaki prefectures with total area about 5600ha (as of August, 2023).

The timberland in Tenryu, Shizuoka is certified forest.



Worldwide Operation

Wood has different characteristics depending on the growth conditions. It is our great responsibility to discern the characteristics of each product and be able to sort them properly for different usage. With extensive experiences over many years and solid trust with worldwide suppliers, Emachu group procures high quality wood and building materials from around the world and constantly supplies to Japan and other countries.



[Affiliated Companies]

Emachu group's overseas office carries its business by sorting, inspecting and purchasing local products, and custom cutting the product to meet customer demand. Product destination is mainly Japan, but the growing developing countries are also in focus. Emachu group is also working on overseas real estate development and rental business.

Emachu group imports various kinds of high quality wood and building materials from North America, Russia, Europe, South America, China, Oceania, South East Asia and so on. Continuation and reliability are very important for procurement from overseas. Emachu group displays its ability by closely networking with the leading suppliers in each country and area. We continue to strive to meet our customers' needs and explore new products or suppliers.

